

Full line Rate / In-Line Ethernet Appliance up to 10 GBit

Evaluation of network health and finding performance bottlenecks is a vital issue in today's competitive telecommunications world. CUBRO TAPs help to get the job done and to find network troubles before the users are affected

2 Gig

20 Gig

10 Gig

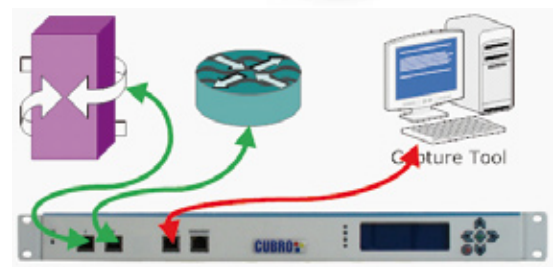


Filter Application (duplication)

Full rate Filtering (duplication)
Example by MAC,IP,PORT or Content
Filter on every bit in the stream.

Capturing of parts of high capacity
Ethernet links, with low cost tools.

Filter change time < 1 ms during operation



Counting Application

Full rate Counting
Example by MAC,IP,PORT or Content
Count on every bit in the stream.

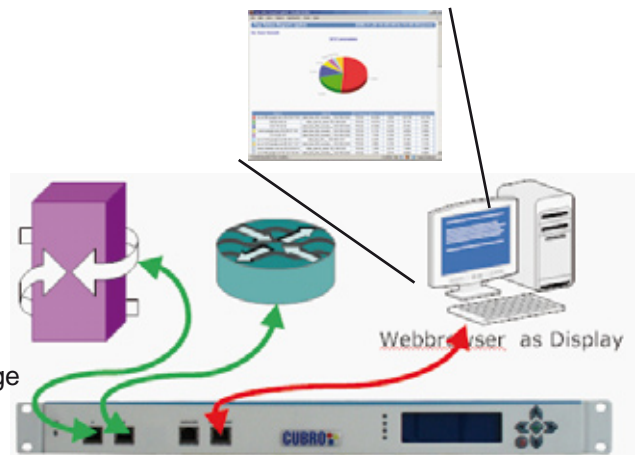
Counting simple parameters

- Bandwidth UDP
- Bandwidth of specific port

Counting complex parameters

- ARP request versus ARP reply
- TCP Window Size from specific IP Range

Adding Counters during
operation in less than 1 ms.

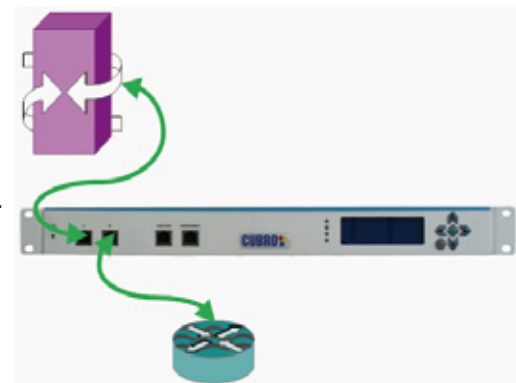


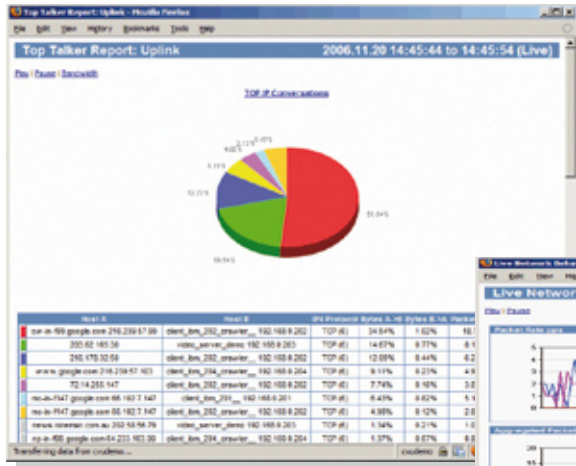
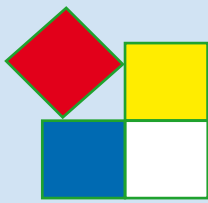
Drop Application

Full rate dropping
Example by MAC,IP,PORT or Content
Define a drop condition based on every bit in the stream.

Adding drop during operation in less than
1 ms.

Content based dropping depending on
payload data





Specifications

Type	2 Gig Unit	10 Gig Unit	20 Gig Unit
Linkspeed	1Gbit	10 Gbit	10 Gbit
Performance	2 Gbit/sec	10 Gbit/sec*	20 Gbit/sec
Interface	RJ45	Optical LC	XFP
Splitter	no	yes	no
Filter	yes	yes	yes
Count	yes	yes	yes
Drop	yes	no	yes
Filter output Port	1	2	2
Management Port	1	1	1
Operating Temperature	0°C to 40°C		
Storage Temperature	-10°C to 60°C		
Dimension (W x D x H)	442 x 360 x 43mm		
Power Rating	150W		
Power Supply Voltage	230VAC		
Weight	6 kg		

* This could be 10 Gig in one ore 5 Gig in both directions or anything in between

Version 1.0 March 2008

Designed for your demands!

We provide the solutions you need – discuss your requirement with our experts.



Distributed by
DHS EIMEA Tools GmbH
 Carl Zeiss Strasse 43
 63322 Rödermark
 ph +49 6074 919908-0
 info@dhs-tools.de
 www.dhs-tools.de

For more information contact your local distributor: