

Packetmaster EX series



48 x 10Gbit Appliance

The Packetmaster EX product series has been developed to pre-aggregate low and medium loaded 10G links to save ports on expensive 10G traffic Analyzers and Capture tools. Alternatively the appliances can be used to automatically switch heavily loaded 10G links between different Analyser- and/or Capture ports.

Once wired, any tool connected to the Packetmaster EX can access any datalink tapped or spanned into the appliance. An intuitive, very easy to use Command Line Interface allows connecting ports to each other in seconds. Changing the setup of the appliance does not influence ports not being part of the change. Each port automatically becomes a 1G or 10G port depending on the SFP(+) used.

Applications

Link / Port Aggregation

Aggregates up to 46 10G ports to one single output port. Multiple Aggregation pipes are available.

Transparent Switching

The EX48 can be used as a fully transparent Any to Any and Many to Any Layer1 switch matrix.

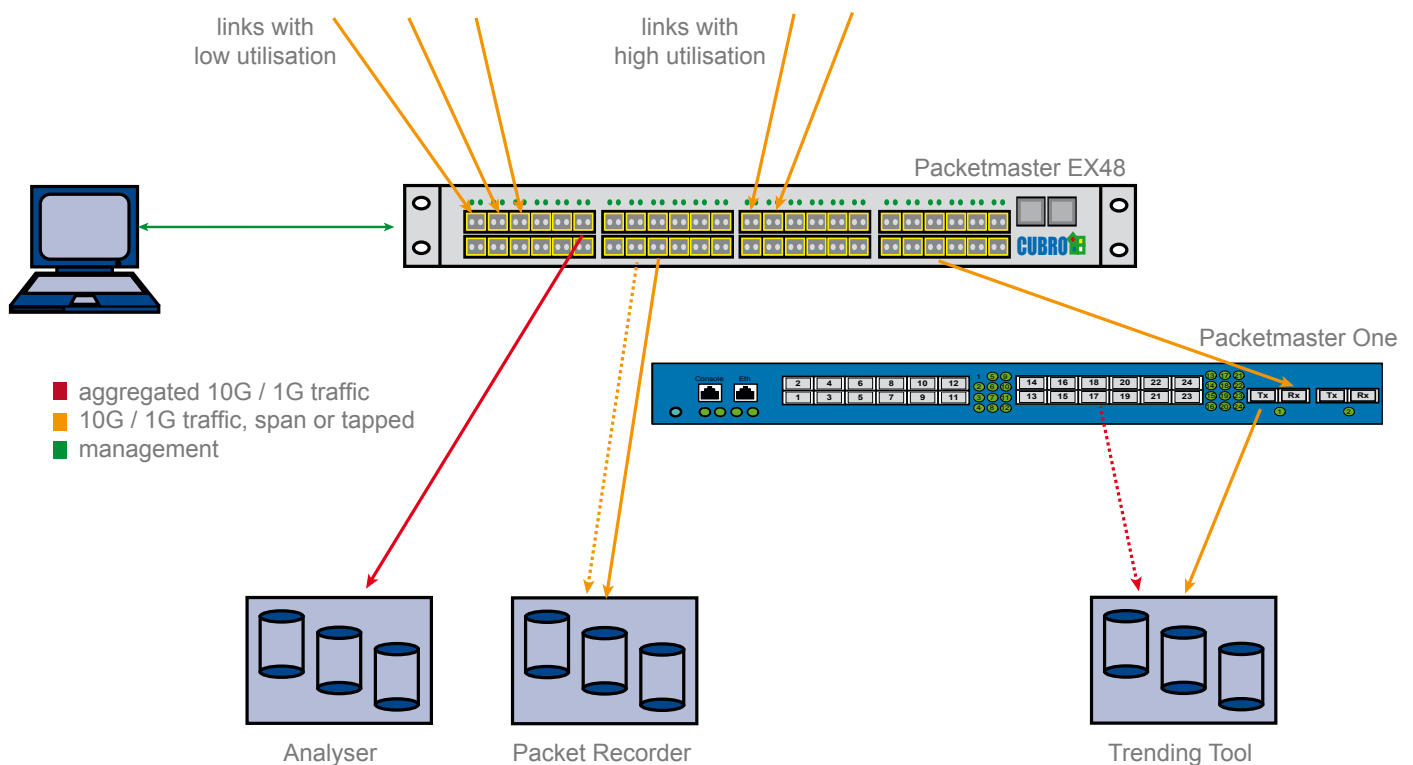
Filtering

The appliance can handle more than 1.000 filters at the same time at line rate. Any filter can either drop or move any packet.

Media conversion

All ports are SFP+ based enabling easy media conversion between single and multi mode applications as well as any optical wavelength.

„Aggregate and Share“



Related Products

Optical TAPs:

All optical TAPs from Cubro are fully passive and non intrusive. Splitting ratios from 50:50 to 90:10 can be realised depending on customer requirements. Single Mode as well as Multi Mode versions are available in a variety of different chassis. Standard connectors are SC or LC, others on request in customer specific solutions.

Standard TAPs support data rates up to 40Gbit/s.



Packetmaster EX Series Specifications

Network Ports

48x 10G on the EX48

Port use

All ports can be used as input as well as output at the same time. Ports can be reconfigured without any operational system impact.

Programming

Very simple CLI command line interface for very complex filter combinations. Remote access, password protected, via Telnet or SSH.

Packets

Supports Jumbo Frames up to 9.000 Bytes.

Filters

MAC Source and Destination
Ethernet Type
VLAN ID / Priority
IP Src/Dest/Protocol/TOS
Protocol
UDP ports
TCP ports
SCTP ports
ICMP Type/Code
Input port
User defined

Bandwidth

Backplane supports up to 960Gbit/s for full duplex full bandwidth switching on all ports simultaneously.

Mechanical Specifications

1U, 19" appliance
43mm (H) x 394mm (D) x 435mm (W)

Electrical Specifications

Input Power: 100-240 V, 2 A, 47-63 Hz
DC Input: -48 VDC nominal, 4.0A

Operating Specifications

Operating Temperature: 0° C to 45° C
Storage Temperature: -10° C to 70° C

Compliance

CE, RoHS

distributed by:



DHS EIMea Tools GmbH
www.dhs-tools.de
+49 6074 9199080