

*Sink High Power.
Here is a Turnkey Solution.*



PLZ-4W SR/LP SERIES

- | | |
|-------------|--------------|
| PLZ5004W SR | PLZ9004W LP |
| PLZ7004W SR | PLZ11004W LP |
| PLZ9004W SR | PLZ13004W LP |

Large Current
Maximum
2600 A
5 kW to
13 kW

New
**Large - Capacity DC
Electronic Load System**

PLZ-4W, 4WH SR/LP SERIES



PLZ-4WH SR/LP SERIES

- | | |
|--------------|---------------|
| PLZ5004WH SR | PLZ9004WH LP |
| PLZ7004WH SR | PLZ11004WH LP |
| PLZ9004WH SR | PLZ13004WH LP |

High Voltage
Maximum
650 v
5 kW to
13 kW

Large-Capacity DC Electronic Load System **NEW**

PLZ-4W SR/LP Series

● The PLZ-4W SR/LP Series offers wide range of the "Large-Capacity DC Electronic Load System" that consists of the conventional electronic load model PLZ1004W and PLZ2004WB applying to the large current (maximum 2600 A) installed in the exclusive rack mount system.

PLZ-4WH SR/LP Series

● The PLZ-4WH SR/LP Series offers wide range of the "Large-Capacity DC Electronic Load System" that consists of the conventional electronic load model PLZ1004WH and PLZ2004WHB applying to the high voltage (maximum 650 V) installed in the exclusive rack mount system.

High Voltage
Maximum
650 V
5 kW to 13 kW



PLZ-4WH LP Series

PLZ-4WH SR Series

Applications (example)

- Charge/Discharge test on the large capacity secondary battery
- Converter evaluation
- Alternator evaluation
- FC stack cell evaluation
- PV panel evaluation
- EV charger

- Heat generation evaluation by the harness electric conduction
- Capacitor endurance test
- Evaluation on the industrial large capacity DC power supply system

Large Current
Maximum
2600 A
5 kW to 13 kW



PLZ-4W SR Series

PLZ-4W LP Series

- The system offers from 5 kW to 13 kW with two types of rack system (SR/LP type), 12 models are available.
- Assembled with exclusive components based on optimization design concept. Delivers the system with fully assembled and tested, so immediate operation is possible.
- The industry's smallest in its class for the multi-functional high-speed response DC electronic load.
- Expandable by installing additional booster units after purchase*.
- *For the installation, adjustment, please contact your nearest distributor.
- AC Input 90 to 250 Vac Auto select, less than 15 A. No special wiring is required.
- Guaranteed specifications even for the smaller capacity system. (Test Data is included with the system as standard document)
- Equipped USB/RS232C/GPIB interface as standard features.
- Capable of operation using the Sequence Creation software "Wavy".
- The Load input terminal is designed on the Safety-Comes-First concept. (protection against electric shocks)
- Available for optional Load Cables applying to the large current. (50 A/100 A/200 A/500 A/1000 A, 3 m, the cable equipped with solderless terminals on both end, 1 set of the bolt and nut)
- The base hold angle for fixing the anchor bolt (OP03-KRC) is available as a rack mount option.

* Definition of Series Name: SR (Smart Rack), LP (Load Pack)

■ Rear Panel (DC INPUT)

PLZ-4W SR/LP Series



SR Series

Input terminals applying to the large current

Input terminals applying to the high voltage



LP Series

PLZ-4WH SR/LP Series



SR Series






LP Series



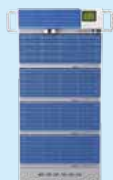



Equipped with the boxed type of safety cover on all models

Maximizing the Safe and Secure design of the load input terminal based on the safety features (protecting from electric shocks), but also from usability perspectives such as an easy-to-connect operation by opening the terminal cover, and capable of visual check.

■ PLZ-4W SR/LP Series Lineup

Maximum input rating	5 kW	7 kW	9 kW	11 kW	13 kW
	1000 A	1400 A	1800 A	2200 A	2600 A
PLZ-4W Smart Rack	 PLZ5004W SR	 PLZ7004W SR	 PLZ9004W SR		
PLZ-4W Load Pack			 PLZ9004W LP	 PLZ11004W LP	 PLZ13004W LP

■ PLZ-4WH SR/LP Series Lineup

Maximum input rating	5 kW	7 kW	9 kW	11 kW	13 kW
	250 A	350 A	450 A	550 A	650 A
PLZ-4WH Smart Rack	 PLZ5004WH SR	 PLZ7004WH SR	 PLZ9004WH SR		
PLZ-4WH Load Pack			 PLZ9004WH LP	 PLZ11004WH LP	 PLZ13004WH LP

OPTION

Sequence creation software

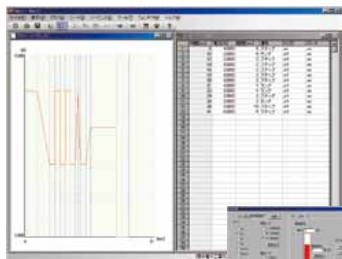
Wavy series



■ Sequence creation software
Wavy for the PLZ-4W

[Operating environment]
Windows 2000/Windows XP/Windows Vista/Windows 7
*For details, please refer to our web site.

*The software that further enhances the waveform generation and sequence functions.
Using a mouse, you can create and edit feel like drawing and filling out the spreadsheet.*



▲Screen sample



- Creating and editing data of test conditions required so that the sequence operation can be done easily.
- Using the save function for data files of test conditions makes routine test condition control easy.
- The progress of executed sequences is displayed by the cursor and settings on an "execution graph."
- It is possible to observe actual output intuitively, using a "monitor graph" that plots monitored values while an execution is in progress.
- Acquired monitor data can be saved as test results.
- A "waveform image" window was newly added, making it easy to see the waveforms of alternating current (AC) signals.
- Arbitrary new waveforms can be easily created and edited. Also, arbitrary waveforms that are created can be quickly written and output.
- The product supports the selection and nonselection of sequence step items. Functions such as the pause function, trigger function, and AC waveform can be selected as needed.

Download !

Trial version is available on our web !!

<http://www.kikusui.co.jp/en/download/index.html>

■ PLZ-4W SR Series

Specifications	Rating			Constant current mode (CC)				Constant voltage mode (CV)			
	Operating voltage	Current	Power	Operating range			Ripple	Operating range		Resolution	
	V	A	W	H range (A)	M range (A)	L range (A)	mArms *1	H range (V)	L range (V)	H range (mV)	L range (mV)
PLZ5004W SR	1.5 to 150	1000	5000	0 to 1100	0 to 110	0 to 11	100	0 to 157.5	0 to 15.75	10	1
PLZ7004W SR		1400	7000	0 to 1540	0 to 154	0 to 15.4	140				
PLZ9004W SR		1800	9000	0 to 1980	0 to 198	0 to 19.8	180				

Specifications	Constant resistance mode (CR)			Constant power mode (CP)			Weight	Power consumption		
	Operating range			Operating range					Approx.	Approx.
	H range (s)	M range (s)	L range (s)	H range (W)	M range (W)	L range (W)			kg	VA
PLZ5004W SR	699.0 to 0	69.90 to 0	6.990 to 0	0 to 5250	0 to 525	0 to 52.5	110	560		
PLZ7004W SR	980.0 to 0	98.00 to 0	9.800 to 0	0 to 7350	0 to 735	0 to 73.5	140	760		
PLZ9004W SR	1260.0 to 0	126.0 to 0	12.60 to 0	0 to 9450	0 to 945	0 to 94.5	170	960		

■ PLZ-4W LP Series

Specifications	Rating			Constant current mode (CC)				Constant voltage mode (CV)			
	Operating voltage	Current	Power	Operating range			Ripple	Operating range		Resolution	
	V	A	W	H range (A)	M range (A)	L range (A)	mArms *1	H range (V)	L range (V)	H range (mV)	L range (mV)
PLZ9004W LP	1.5 to 150	1800	9000	0 to 1980	0 to 198	0 to 19.8	180	0 to 157.5	0 to 15.75	10	1
PLZ11004W LP		2200	11000	0 to 2420	0 to 242	0 to 24.2	220				
PLZ13004W LP		2600	13000	0 to 2860	0 to 286	0 to 28.6	260				

Specifications	Constant resistance mode (CR)			Constant power mode (CP)			Weight	Power consumption		
	Operating range			Operating range					Approx.	Approx.
	H range (s)	M range (s)	L range (s)	H range (W)	M range (W)	L range (W)			kg	VA
PLZ9004W LP	1260.0 to 0	126.0 to 0	12.60 to 0	0 to 9450	0 to 945	0 to 94.5	250	960		
PLZ11004W LP	1540.0 to 0	154.0 to 0	15.40 to 0	0 to 11550	0 to 1155	0 to 115.5	275	1160		
PLZ13004W LP	1820.0 to 0	182.0 to 0	18.20 to 0	0 to 13650	0 to 1365	0 to 136.5	300	1360		

■ PLZ-4WH SR Series

Specifications	Rating			Constant current mode (CC)				Constant voltage mode (CV)			
	Operating range	Current	Power	Operating range			Ripple	Operating range		Resolution	
	V	A	W	H range (A)	M range (A)	L range (A)	mArms *1	H range (V)	L range (V)	H range (mV)	L range (mV)
PLZ5004WH SR	5 to 650	250	5000	0 to 262.5	0 to 26.25	0 to 2.625	60	0 to 682.5	0 to 68.25	20	2
PLZ7004WH SR		350	7000	0 to 367.5	0 to 36.75	0 to 3.675	84				
PLZ9004WH SR		450	9000	0 to 472.5	0 to 47.25	0 to 4.725	108				

Specifications	Constant resistance mode (CR)			Constant power mode (CP)			Weight	Power consumption		
	Operating range			Operating range					Approx.	Approx.
	H range (s)	M range (s)	L range (s)	H range (W)	M range (W)	L range (W)			kg	VA
PLZ5004WH SR	52.5 to 0	5.25 to 0	525 m to 0	0 to 5250	0 to 525	0 to 52.5	110	560		
PLZ7004WH SR	73.5 to 0	7.35 to 0	735 m to 0	0 to 7350	0 to 735	0 to 73.5	140	760		
PLZ9004WH SR	94.5 to 0	9.45 to 0	945 m to 0	0 to 9450	0 to 945	0 to 94.5	170	960		

■ PLZ-4WH LP Series

Specifications	Rating			Constant current mode (CC)				Constant voltage mode (CV)			
	Operating voltage	Current	Power	Operating range			Ripple	Operating range		Resolution	
	V	A	W	H range (A)	M range (A)	L range (A)	mArms *1	H range (V)	L range (V)	H range (mV)	L range (mV)
PLZ9004WH LP	5 to 650	450	9000	0 to 472.5	0 to 47.25	0 to 4.725	108	0 to 682.5	0 to 68.25	20	2
PLZ11004WH LP		550	11000	0 to 577.5	0 to 57.75	0 to 5.775	140				
PLZ13004WH LP		650	13000	0 to 682.5	0 to 68.25	0 to 6.825	156				

Specifications	Constant resistance mode (CR)			Constant power mode (CP)			Weight	Power consumption		
	Operating range			Operating range					Approx.	Approx.
	H range (s)	M range (s)	L range (s)	H range (W)	M range (W)	L range (W)			kg	VA
PLZ9004WH LP	94.5 to 0	9.45 to 0	945 m to 0	0 to 9450	0 to 945	0 to 94.5	235	960		
PLZ11004WH LP	115.5 to 0	11.55 to 0	1.155 to 0	0 to 11550	0 to 1155	0 to 115.5	255	1160		
PLZ13004WH LP	136.5 to 0	13.65 to 0	1.365 to 0	0 to 13650	0 to 1365	0 to 136.5	280	1360		

*1 Measurement frequency bandwidth: 10 Hz to 20 MHz At measurement current of 100 A

■ Dimensions (mm)

PLZ5004W SR	432.6 W (545) × 469.6 H (570) × 764.7 D (955)
PLZ7004W SR	432.6 W (545) × 602.3 H (705) × 764.7 D (955)
PLZ9004W SR	432.6 W (545) × 735 H (835) × 764.7 D (955)
PLZ9004W LP	570 W × 1350 H (1435) × 950 D (1020)
PLZ11004W LP	
PLZ13004W LP	
PLZ5004WH SR	432.6 W (545) × 559.6 H (660) × 764.7 D (955)
PLZ7004WH SR	432.6 W (545) × 737.3 H (840) × 764.7 D (955)
PLZ9004WH SR	432.6 W (545) × 915 H (1015) × 764.7 D (955)
PLZ9004WH LP	570 W × 1350 H (1435) × 950 D (1020)
PLZ11004WH LP	
PLZ13004WH LP	
PLZ13004WH LP	

■ Common Specifications

Input voltage range 100 V AC to 240 V AC (90 V AC to 250 V AC),
single phase, continuous
Input frequency range 47 Hz to 63 Hz
Operating temperature range 0 to 40 °C
Operating humidity range 20 %rh to 85 %rh (without condensation)
Storage temperature range -25 °C to 70 °C
Storage humidity range 90 %rh or less (without condensation)

For details of the Large-Capacity DC
Electronic Load System PLZ4W SR/LP
Series, please refer to our web site.



www.kikusui.co.jp

■ All products contained in this catalogue are equipment and devices that are premised on use under the supervision of qualified personnel, and are not designed or produced for home-use or use by general consumers. ■ Specifications, design and so forth are subject to change without prior notice to improve the quality. ■ Product names and prices are subject to change and production may be discontinued when necessary. ■ Product names, company names and brand names contained in this catalogue represent the respective registered trade name or trade mark. ■ Colors, textures and so forth of photographs shown in this catalogue may differ from actual products due to a limited fidelity in printing. ■ Although every effort has been made to provide the information as accurate as possible for this catalogue, certain details have unavoidably been omitted due to limitations in space. ■ If you find any misprints or errors in this catalogue, it would be appreciated if you would inform us. ■ Please contact our distributors to confirm specifications, price, accessories or anything that may be unclear when placing an order or concluding a purchasing agreement.

KIKUSUI ELECTRONICS CORPORATION | www.kikusui.co.jp
 1-1-3, Higashiyamata, Tsuzuki-ku, Yokohama, 224-0023, Japan
 Phone : (+81)45-593-7570, Facsimile : (+81)45-593-7571



dhs ELMEA tools GmbH

Carl-Zeiss-Straße 43 · 63322 Rödermark / Germany
 fon +49 60 74 / 91 99 08 · fax +49 6074 / 91 96 747
 web www.dhs-tools.de · mail info@dhs-tools.de