

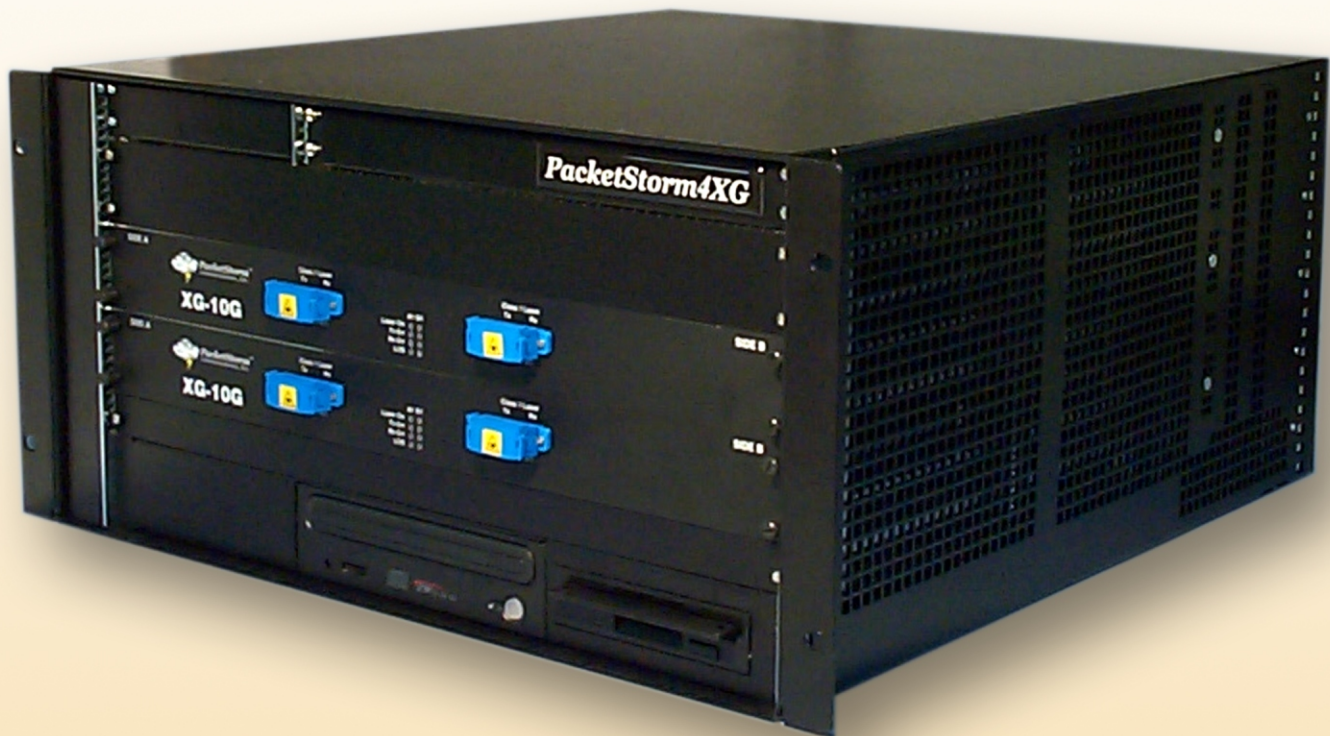


PacketStorm

IP Network Emulator

“Providing the Internet in a box”

Introducing the PacketStorm 4XG

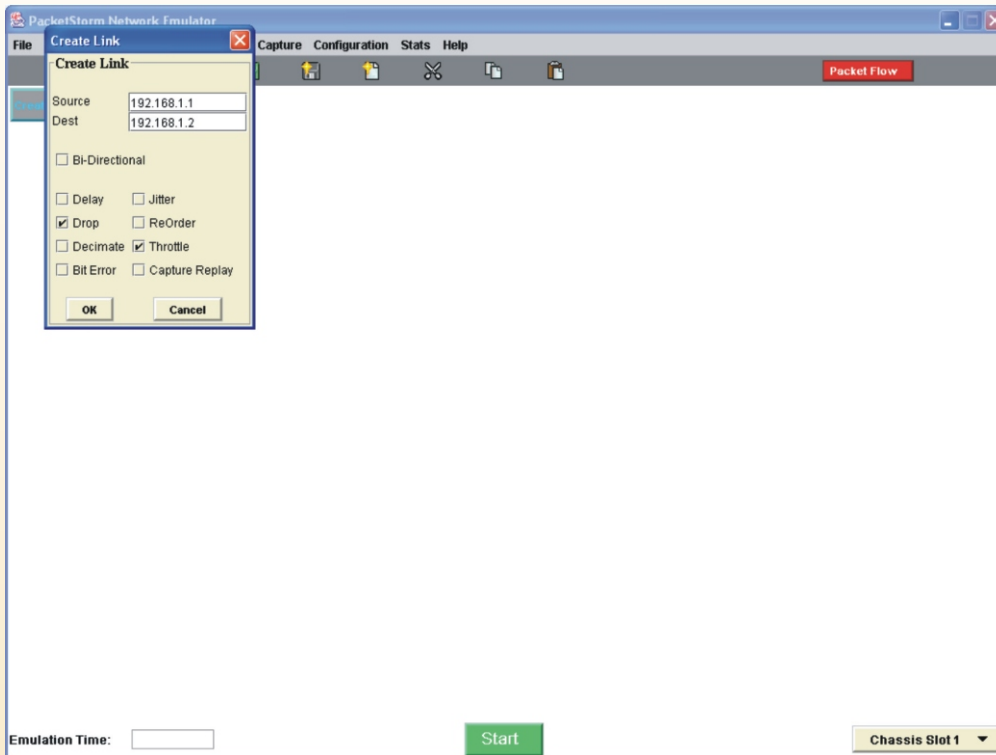


- *40 Gbps chassis capacity*
- *Two independent module slots*
- *Wire rate impairments*
- *GigE and 10GigE ports*

Features and Description

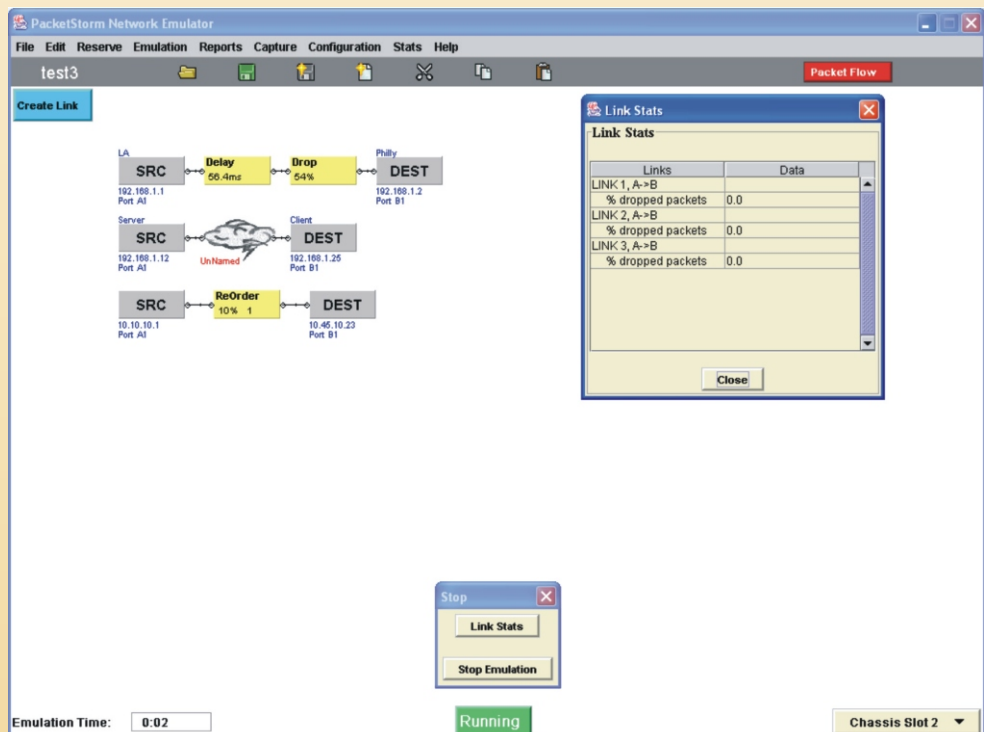
The PacketStorm 4XG IP network emulator reproduces the unfavorable conditions of IP networks and WANs in a controllable and repeatable lab setting. The 4XG has two independent network emulator module slots. Each slot supports either network emulator module (1G and 10G). Each module impairs all packet sizes at wire rate.

User Interface & Remote Control



The user interface is designed for ease of use. An IP network is created by selecting the link's impairments in the left screenshot. The below screenshot shows multiple IP networks and corresponding statistics. In addition, Tcl scripting allows the automation of sequential tests. The IP network configuration can be saved and recalled thus reducing test set-up times.

The PacketStorm4XG emulator allows remote access over any IP network through a browser control interface or remote Tcl command set. Remote control provides the capability to monitor or change the test scenario from the lab, office, or home.



Network Interface Modules

XG-10G Module:

- Two ports of 10 Gigabit Ethernet (XFP)
- 850 nm, 1310 nm, 1550 nm LAN
- 850 nm, 1310 nm, 1550 nm WAN

XG-1G Module:

- Sixteen ports of Gigabit Ethernet (SFP)
- Hot pluggable
- 850 nm, 1310 nm, 1550 nm, Copper

PacketStorm 4XG Chassis

Video:	SVGA
Diskette Drive:	1.44 MB
Hard Drive:	40 GB
CD:	52x
Dimension:	9 x 19 x 19 inches
Weight:	40 lbs
Warm-up Time:	30 minutes
Remote Interface:	
Ethernet	10/100 Base-T
Power Requirements:	
Voltage:	90 -128 V _{AC} / 180 - 265 V _{AC}
Frequency:	59 - 61 / 49 - 51 Hz
Operating Environment:	
Temperature:	0 to 70 C

Ordering Information

PacketStorm4XG: 40Gbps IP Network Emulator. Has two module slots. Accommodates the XG-10G and XG-1G modules.

Options:

XG-103	Two ports Gigabit Ethernet (sfp)
XG-10G	Two ports 10 Gigabit Ethernet (xfp)
PSC-OOW	Out of warranty reinstatement
PSC-1YR	One additional year warranty & maint. support
PSC-2YR	Two additional years warranty & maint. support



PacketStormTM
Communications, Inc.

Phone: 732-544-2434

Fax: 732-544-2437

www.packetstorm.com